

HEATER DUCTS



PLIADUCT

100% rigid self-supporting gray PVC material with a ribbon-lock construction.
 2" - 6" | 25ft 8" - 12" | 10ft
 -23°C to +66°C



THERMAFLOW

Designed to transfer hot air up to 260°C (500°F) in tough winter conditions.
 12" | 12ft, 25ft
 -50°C to +260°C



AIR JET DUCTING

Used on propane heaters and rated up to 150°C (300°F).
 12" | 12ft, 25ft
 -40°C to +150°C



THERMASURGE

Used to supply or vent air on industrial, construction and commercial jobsites.
 12" | 25ft
 -15°C to +80°C

STEAM HOSE



STEAM MAXX CHLOROBUTYL

Chlorobutyl rubber gives superior resistance to heat aging and improved life expectancy.
 3", 1", 1.5", 2" | 50ft
 -40°C to +221°C



STEAM MAXX - EPDM

Extremely flexible hose for use with steam at temperatures up to 208°C
 1/2", 3/4", 1", 1.25", 1.5", 2" | 50ft, 100ft
 -40°C to +208°C



TEXTILE STEAM

For thawing, washdown at paper mills and food plants.).
 1/2", 3/4", 1" | 50ft, 100ft
 -40°C to +170°C



CHALLENGER STEAM

Industrial steam cleaner machines and pressure washer machines.
 500FT Reels (2 X 250FT)
 Steam 165°C Water 121°C

MINING & DRILLING HOSE



EXTRA PRESSURE MAXX

Heavy duty 400 PSI air/water hose for use in demanding environments such as mining.
 50ft | 100ft
 -30°C to +100°C



STEEL MAXX

Mandrel built wire reinforced heavy duty air hose for high pressure pneumatic applications.
 50ft | 100ft
 -30°C to +80°C



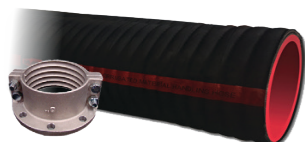
CONAIR HOSE

Nitrile construction makes this product ideal where oil is a factor
 3/4" | 25ft multiples, 100ft coils
 1- 4" | 25ft multiples, 300ft coils
 -30°C to +100°C



ANTI STATIC BLASTING HOSE

For loading of ammonium nitrate/fuel oil blasting agents used in mining and construction.



CMC MAXX

CMC (Corrugated Material Conducting) hose, utilizes split flanged couplings and is designed for abrasive suction and discharge service.
 2" to 6" | 100ft 8" | 40ft
 10" | 40ft 12" | 20ft
 -40°C to +82°C



LW DRILLERS HOSE

A lightweight extremely portable 300PSI Red and 600PSI Yellow water hose.
 1" | 100ft
 -40°C to +60°C

HOSE ACCESSORIES



- Punch Locking Tools
- Cam & Groove Couplings
- Travis Couplings
- Powerlock Clamps
- Fat Lip Locking Arm Cams
- Type B Quick Couplings
- Double Bolt Clamps
- AND MORE

VAC & TANK TRUNK HOSE



PETRO MAXX

Suction and discharge hose for gas, distillate, kerosene, diesel, oil suspensions, emulsions and other petroleum products. 100 ft cut to multiples of 5ft -35°C to +93°C



MULTI MAXX

Designed to be used in multiple applications from water suction and discharge to petroleum transfer. 100 ft cut to multiples of 5ft -40°C to +121°C



POLAR MAXX

Petroleum suction and discharge hose designed to remain flexible in low temperatures. 100 ft cut to multiples of 5ft -50°C to +93°C



TIGER TAIL

Maximum abrasion protection for sewer jetting hose, expensive camera and utility inspection equipment. 25ft, 50ft -40°C to +60°C



WEAR MAXX

Extremely abrasion resistant hose for conveying wood, metal, rock, concrete, dust, etc. under vacuum. Corrugated for excellent flexibility. 6", 8" | 100ft 10" | 40ft -40°C to +82°C



FLOW MAXX

Heavy duty rubber hose that is excellent for construction, quarries, and general use. 3/4"-6" | 100ft cut to 5ft multiples 8"-12" | 40ft cut to 5ft multiples -32°C to +82°C



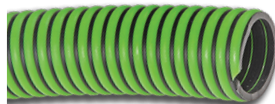
UF2

For dry applications where severe abrasion is a factor. 6"-8" -40°C - +60°C



180AR

Suction and discharge of dry materials such as sand, crushed rock, cement etc. 1 1/4 - 6" | 100ft 8" | 50ft cut to multiples of 5ft 10" | 20ft cut to multiples of 5ft -40°C - +60°C



EPDM WATER SUCTION

For agricultural chemicals and general industrial use. External helix provides for easy drag. 100ft cut to multiples of 5ft -40°C - +60°C



SCORPION WATER

Hybrid garden hose with a polymer construction that remains flexible in cold temperatures. 50ft, 100ft -40°C to +65°C



CHALLENGER CES

For agricultural chemicals, general industrial use and oilfield service. 1.5-6" | 100ft cut to 5ft multiples -40°C - +60°C



PRESSURE WASHER

For use with pressure washer machines 4000PSI - Black, Blue, Yellow 6000PSI - Grey -30°C to +121°C

FLUSH HOSE



SPOR-MM16X600

Sewer flushing hose with synthetic fiber braid reinforcement. 6" - 10"



HPBU-M16X600

Sewer flushing hose with synthetic fiber braid reinforcement. 3/4"-1"



LLGR-MM08

4000 PSI lateral line hose with synthetic fiber braid reinforcement. 1/2"-3"



LLBU-MM08

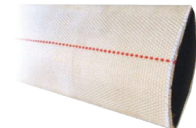
3000 PSI lateral line hose with synthetic fiber braid reinforcement. 1/2" - 6"

FIRE HOSE



FOREST LITE 1&2

A single jacket, polyurethane lined lightweight hose intended for use in wildland fire suppression. 1"-1 1/2" | 50ft, 100ft



INDUSTRIAL MILL - IMD

Economical pump discharge and washdown hose. 25ft | 50ft | 75ft | 100ft -20°C to +65°C



ARMoured REEL

Recommended for skid units, booster reels, industrial reels, forestry and wildland applications. 1" | 50ft, 100ft, 150ft, 200ft

LAYFLAT



CONTRAFLEX

Designed for discharging water and oil contaminated water at high pressures. 25ft multiples & 300ft coils -30°C to +95°C



PVC LAYFLAT

Designed for use where higher working pressures are required. Multiples of 25ft to 300ft Maximum -10°C to +60°C