



CROSS49 SUPPLIES & RENTALS DECKHANDS

PIPELINE



DECKHAND DH4

- Head unit mounts to any brand of excavator in the 20 to 36 metric ton range.
- 360° Continuous Rotation.
- In-Cab display allows operator to safely monitor and adjust all functions, working parameters, and hydraulic settings from inside the excavator or prime mover.
- Designed with load holding valves so that pipe is held securely regardless of hydraulic pressure.
- Main beam can tilt up to 15 degrees in either direction.
- Shift function allows Arms to shift up to 5.5 inches along the Main Beam.
- • Powered by the auxiliary circuit on excavator or prime mover.

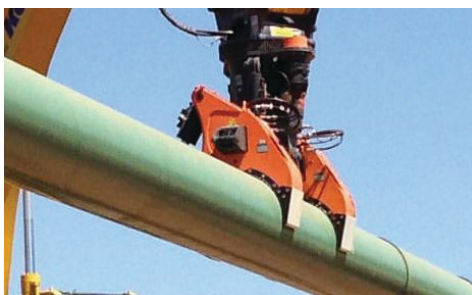


DECKHAND DH5

- Head unit mounts to any brand of excavator in the 20 to 36 metric ton range.
- 360° Continuous Rotation.
- In-Cab display allows operator to safely monitor and adjust all functions, working parameters, and hydraulic settings from inside the excavator or prime mover.
- Designed with load holding valves so that pipe is held securely regardless of hydraulic pressure.
- Main beam can tilt up to 15 degrees in either direction.
- Shift function allows Arms to shift up to 5.5 inches along the Main Beam.
- Powered by the auxiliary circuit on excavator or prime mover.

WWW.CROSS49.COM





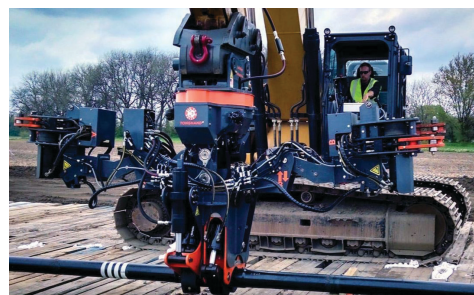
DECKHAND DHL

- Head unit mounts to any brand of excavator in the 40 to 50 metric ton range.
- 360° Continuous Rotation
- In-Cab display allows operator to safely monitor and adjust all functions, working parameters, and hydraulic settings from inside the excavator or prime mover.
- Designed with load holding valves so that pipe is held securely regardless of hydraulic pressure.
- Main Beam can tilt up to 14° in either direction.
- Shift Function allows Arms to shift up to 7.5" along the Main Beam.
- Powered by the auxiliary circuit on excavator or prime mover.
- Optional stick-mounted camera allows operator to see in even the most difficult spaces.



DECKHAND DHXL

- Head unit mounts to any brand of excavator in the 60-75 metric ton class.
- 360° Continuous Rotation.
- In-Cab display allows operator to safely monitor and adjust all functions, working parameters, and hydraulic settings from inside the excavator or prime mover.
- Designed with load holding valves so that pipe is held securely regardless of hydraulic pressure.
- Main Beam can tilt up to 14° in either direction.
- Shift Function allows Arms to shift up to 7.5" along the Main Beam.
- Powered by the auxiliary circuit on excavator or prime mover.
- Optional stick-mounted camera allows operator to see in even the most difficult spaces.



TONGHAND

- TONGHAND® mounts to any brand of excavator in the 30-36 metric ton class.
- Patented TONGWISE makes and breaks joints up to 120,000-foot pounds of torque.
- Works with pipe reamers and adapter sub connections ranging from 6.5" to 10".
- Patented Roller Arms and shift function allow you to thread and unthread all connections.
- Gull Wing design allows you to easily move arms out of way to make and break reamers.
- Tilt function allows up to 20° of tilt in both directions.
- Shift feature allows the pipe to be shifted a total of 7"
- TONGHAND® can work as a pipe handler for precise placement of drill rod on rigs, racks or trucks.
- TONGHAND® control system and In-Cab display allows you to torque pipe joints to your specified torque value.



PA ARM

20" and 24" PIPE ARM

Main Beam Size
6" X 6"

Capacity:
13,000 LB / 5,897 KG

Weight:
680 LB / 308 KG



IPA ARM

4"-12"

INTERCHANGEABLE
PIPE ARM

Main Beam Size
6" X 6"

Capacity:
11,000 LB / 4,990 KG

Weight: (without tips)
320 LB / 145 KG



IPAM ARM

14"-18"

INTERCHANGEABLE
PIPE ARM

Main Beam Size
6" X 6"

Capacity:
13,000 LB / 5,897 KG

Weight: (without tips)
620 LB / 281 KG



UA ARM

UTILITY ARM

Main Beam Size
6" X 6"

Capacity:
17,000 LB / 7,711 KG

Weight: (without tips)
725 LB / 329 KG



MA ARM

MAT ARM

Main Beam Size
6" X 6"

Capacity:
16,000 LB / 7,258 KG

Weight: (without tips)
1000 LB / 454 KG