



# **CROSS49 SUPPLIES & RENTALS** **EROSION & SEDIMENT CONTROL**

**CIVIL & INDUSTRIAL CONSTRUCTION • ENVIRONMENTAL REMEDIATION**

Construction activities often lead to significant alterations in the landscape, involving the removal of soil-stabilizing vegetation and the exposure of fine-grained earth. This, in turn, can result in issues such as stormwater runoff and the erosion of valuable soils.

The need for erosion control and sediment control is prevalent across various facets of civil construction. A wide array of products, ranging from synthetic fibers to entirely natural and 100% biodegradable options, is available to address these challenges. These purpose-built solutions exhibit diverse lifespans, lasting from a mere day or two to up to six months or even serving as a permanent fix.

These specialized products can be employed individually or in various configurations, depending on the specific challenges at hand. Whether used as standalone measures or in combination, they offer effective solutions to mitigate the impact of construction-related landscape modifications.



**[WWW.CROSS49.COM](http://WWW.CROSS49.COM)**







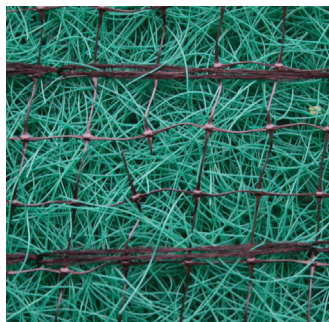
## **ROLLED EROSION CONTROL BLANKETS**

Rolled Erosion Control Blankets provide soil erosion protection and assist in the establishment of vegetation on moderate slopes or low-flow channel applications. There are a variety of Erosion Control Blankets including short-term, extended term, long term photo-degradable and 100% bio-degradable.



## **SILTATION BMP'S**

Cross49 supplies a wide variety of Catch Basin Protection products. We have a product to meet any need for catch basin and curb inlet protection. The majority of our products can be customized to your specifications.



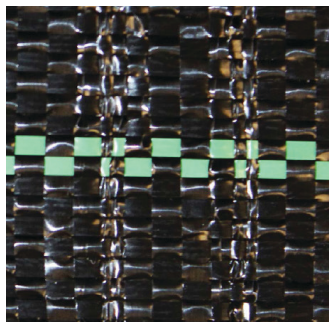
## **TURF REINFORCEMENT MAT**

Turf Reinforcement Mats (TRM) are rolled erosion control geosynthetics meant for permanent erosion control and turf reinforcement. When used as part of an erosion control solution TRMs can protect critical slopes or channels against erosion and help vegetation return quickly after storm events.



## **WATTLES**

A cost effective erosion control solution designed to curb the effects of medium to high velocity storm and water runoff. Designed to be used in channels and perimeter sediment control. Straw Wattles are composed of straw or wood fiber encased in a photo-degradable or bio-degradable netting.



## **SILT FENCE**

Used to control silt contamination in waterways by filtering silt and debris from runoff before it leaves your construction site. Manufactured using high tenacity polypropylene yarns that are woven to form a dimensionally stable network, which allows the yarns to maintain their relative position. It resists ultraviolet deterioration, rotting, and biological degradation and is inert to commonly encountered soil chemicals.



## **TURBIDITY CURTAINS**

A flexible, impermeable barrier that is weighted at the bottom. Contains sediment and silt stirred up by construction activities in or near bodies of water, dredging operations and rainwater runoff.



## **POLLUTION PREVENTION FENCE**

Siltron is a composite silt fence designed to provide the highest level of environmental protection on the market. Composed of 3 material layers which increases overall strength while improving water flow and filtration capabilities. Siltron will absorb hydrocarbons and certain heavy metals from runoff water.



## **HARD ARMOR SOLUTIONS**

Cross49's Hard Armor Solutions offer advantages in safety, cost, performance and more when compared to traditional rock riprap, gabions or poured in-place concrete.